

# AI-powered decisions at the edge

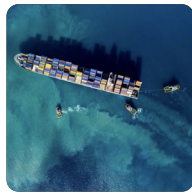
The stakes are high. When time is of the essence, AI powers insights in real-time at the edge, with greater security by processing time sensitive data where it's stored. Modzy and the HPE Edgeline EL8000 Converged Edge System bring AI to the edge.

Modzy runs seamlessly on the HPE Edgeline EL8000 Converged Edge system to use, manage, and govern AI models wherever you go. With fast NVIDIA-powered accelerators, the solution delivers secure AI with data center computing power packaged and optimized for deployment anywhere.

## A sampling of the over 100 commercial models available:



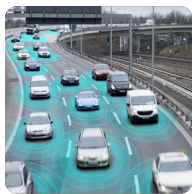
Object Tracking



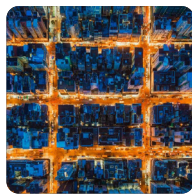
SAR Ship Detection



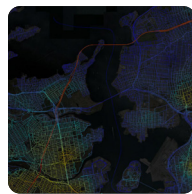
Military Equipment Classification



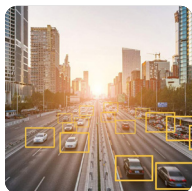
Vehicle Detection in FMV



Building Damage Classification



Emerging Pattern Detection



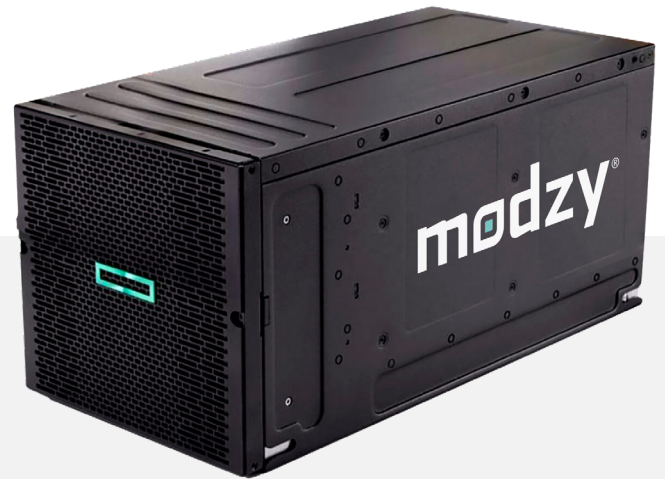
Vehicle Re-Identification



Facial Recognition



Weapons Detection



## HPE Edgeline EL8000 Converged Edge System Key Features:

- Ultra-Compact form factor, 50 lbs.
- Intel Xeon Scalable Processor
- Full Ruggedized and Enhanced Environmental Specifications
- Modular and Secure
- Powerful NVIDIA GPU
- Optional 810G and Airline Carry On Cases

*Models listed are for illustrative purposes and not pre-loaded on application without prior purchase.*

# Modzy on the HPE Edgeline EL8000 Converged Edge system

Modzy is the secure platform to use, manage, and scale AI models. With Modzy on the HPE Edgeline EL8000 Converged Edge system, you can run AI against real-time streaming data at the edge, increasing speed to insight. Bring rapid upload, governance, security, and efficient performance to the edge.

- Modzy efficiency allows for model ensembling in the HPE Edgeline EL8000 Converged Edge system architecture
- Centralized AI management and defense-grade security
- Automated process to monitor model performance, detect drift, and retrain
- Near real-time explainability solution for model predictions
- Open architecture and integrations into popular model training tools and frameworks
- Deployment options – cloud, on-premise, and edge – with smart infrastructure scaling to control costs



## Deploy

Deploy models into production in minutes, not months



## Use

Add AI power to any system through integrations with your existing model training tools and business applications



## Monitor

Dashboards and performance metrics for all stakeholders overseeing AI usage and performance

## Sample Configurations of the HPE Edgeline EL8000 Converged Edge system with Modzy

### Deep Learning

- Four blades with NVIDIA T4 GPUs
- General purpose CPU/RAM/storage configuration per blade
- Maximizes GPU capacity for running multiple deep learning models

### High Performance Computing

- Four blades with maximized CPU/RAM
- General purpose storage configuration per blade
- Useful for running multiple CPU-based models concurrently

### Edge AI + Data Retention

- One 2U blade with NVIDIA A100, maximized CPU/RAM
- One 2U storage blade with a large, highly available storage volume
- Useful for network-disconnected deployments to perform edge AI while storing and retaining inputs/outputs for later use

### Customize your Appliance

- Configure hardware options to match your workload
- Deploy your own mission-critical software alongside Modzy's powerful AI software platform
- Dynamically scale with container and Kubernetes orchestration

Interested in bringing AI to the Edge?

Visit [modzy.com/HPE-edgeline8000](https://modzy.com/HPE-edgeline8000) to learn more.

[modzy.com](https://modzy.com)